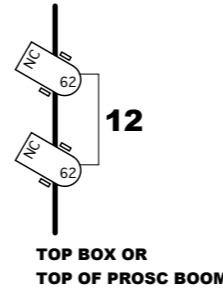
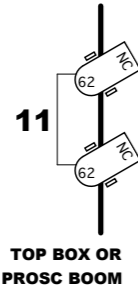
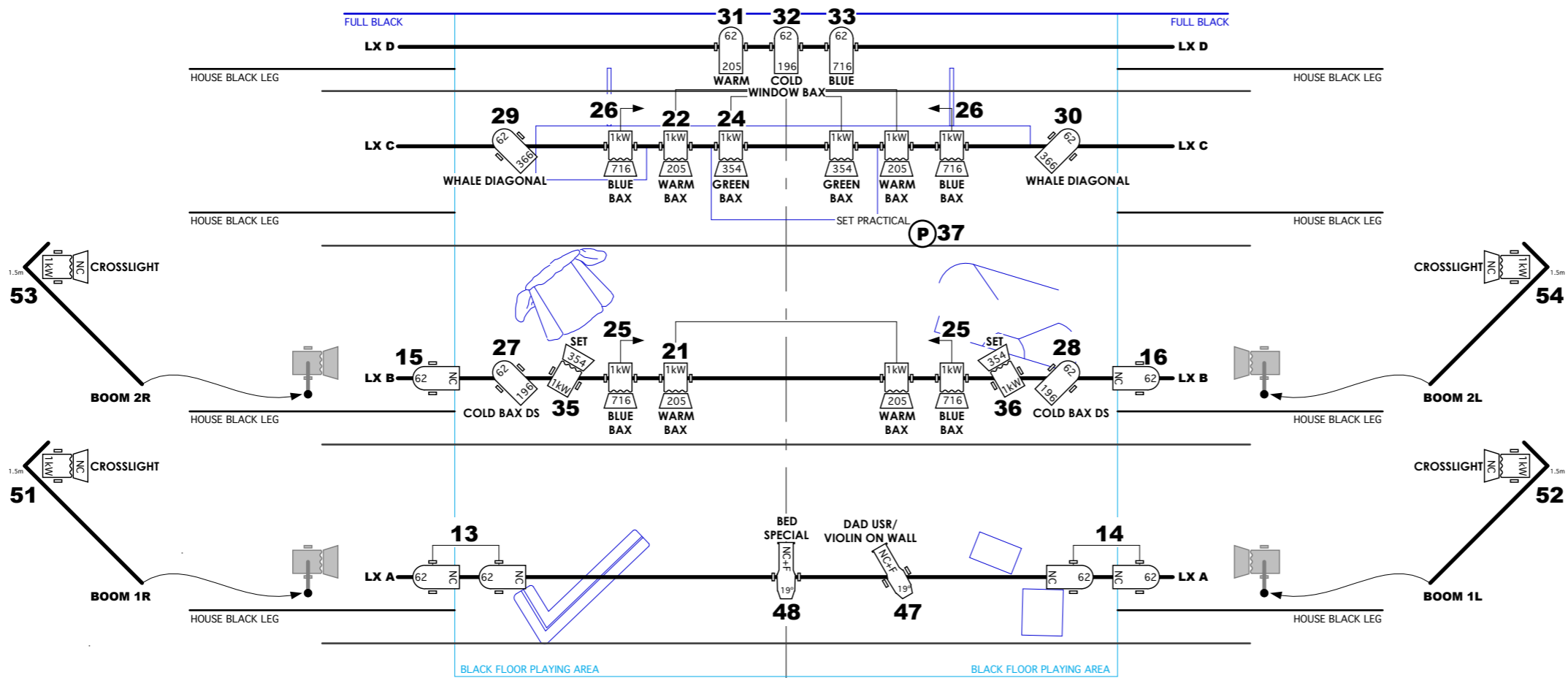


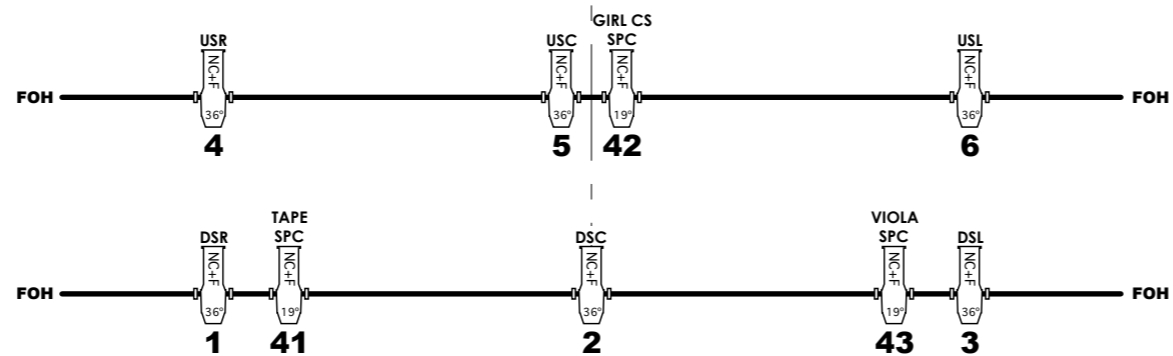
4.0m 3.5m 3.0m 2.5m 2.0m 1.5m 1.0m 0.5m 0.0m 0.5m 1.0m 1.5m 2.0m 2.5m 3.0m 3.5m 4.0m

**flying plot**

- 6.0m FULL BLACK
- 5.7m LX D
- 5.5m BLACK LEGS
- 5.3m BLACK BORDER
- 4.8m LX C
- 4.2m BLACK LEGS
- 3.9m BLACK BORDER
- 2.7m LX B
- 2.4m BLACK LEGS
- 2.1m BLACK BORDER
- 0.9m LX A
- 0.6m BLACK LEGS
- 0.3m HEADER
- 0.0m SETTING LINE



4.0m 3.5m 3.0m 2.5m 2.0m 1.5m 1.0m 0.5m 0.0m 0.5m 1.0m 1.5m 2.0m 2.5m 3.0m 3.5m 4.0m



**notation**

- colour number 23
  - beam angle 26°
  - channel number 62
- Lee filters have no prefix (except HT)  
NC indicates no colour  
+F denotes + frost R119

**legend**

- Source 4 750W or equivalent profile
- Par 64 or Source Par 750W
- Fresnel or PC 2kW
- Fresnel or PC 1kW
- Fresnel or PC 500W
- Practical Lamp
- Cyc Flood - Three Circuit

**notes**

- masking is shown as an example, provide full black box masking
  - provide one circuit USC at deck level for set practical
- THIS DRAWING REPRESENTS VISUAL CONCEPTS AND CONSTRUCTION SUGGESTIONS ONLY.  
THE LIGHTING DESIGNER IS UNQUALIFIED TO DETERMINE THE ELECTRICAL OR STRUCTURAL APPROPRIATENESS OF THE DESIGN AND WILL NOT ASSUME RESPONSIBILITY FOR IMPROPER ENGINEERING, CONSTRUCTION, HANDLING, INSTALLATION OR USE OF THE EQUIPMENT.  
ALL MATERIALS AND CONSTRUCTION MUST MEET THE MOST STRINGENT LOCAL SAFETY REQUIREMENTS.

**other**

**100** houselights

**james whiteside lighting design**

www.jameswhiteside.com lighting@jameswhiteside.com

Tall Stories Theatre Company

**The Snail And The Whale**

based on the book by Julia Donaldson, illustrated by Alex Scheffler

Touring 2021 - Small Theatre Version without Cyclorama

directed by Toby Mitchell  
designed by Isla Shaw

drawn by **jw**

**LP1**

**LIGHTING PLAN**

0m 0.5m 1.0m 1.5m

**1:50**  
**@A3**

channel 47 repurposed 06/12/15  
footlights replaced with crosslight 10/12/15  
2018 tour version 04/05/18  
additional upstage border 02/06/18  
2021 tour version 30/04/21

DO NOT SCALE FROM THIS DRAWING

This drawing represents a lighting design that is wholly owned by James Whiteside. This drawing and the lighting it represents are licensed to the above company ONLY in respect of the above performances, at the above theatre(s), on the above dates and for no other use whatsoever. ©James Whiteside 2012-21 All rights reserved